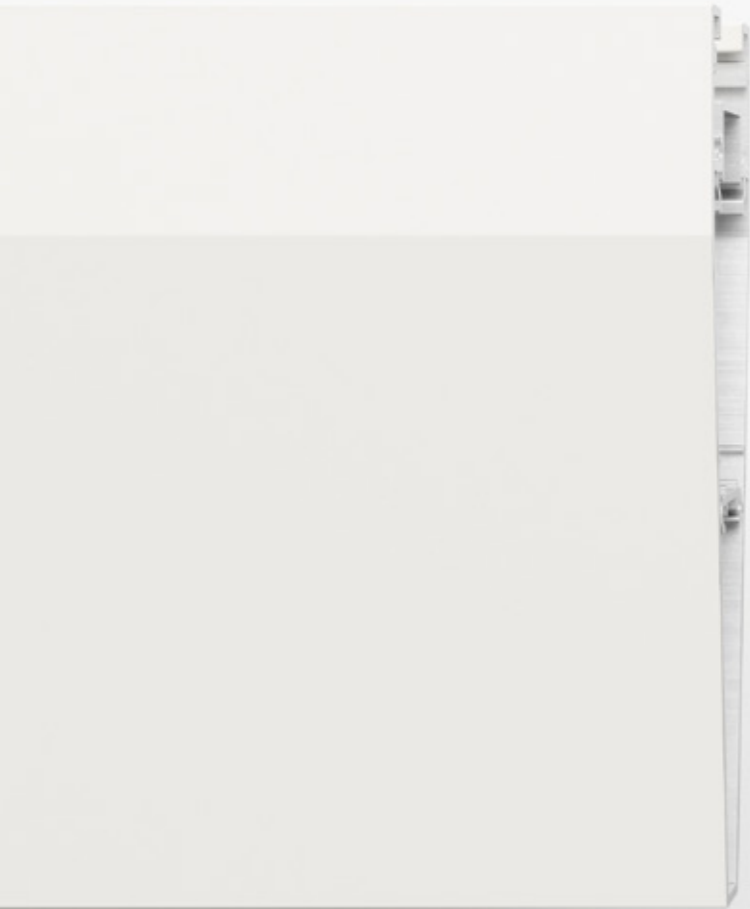


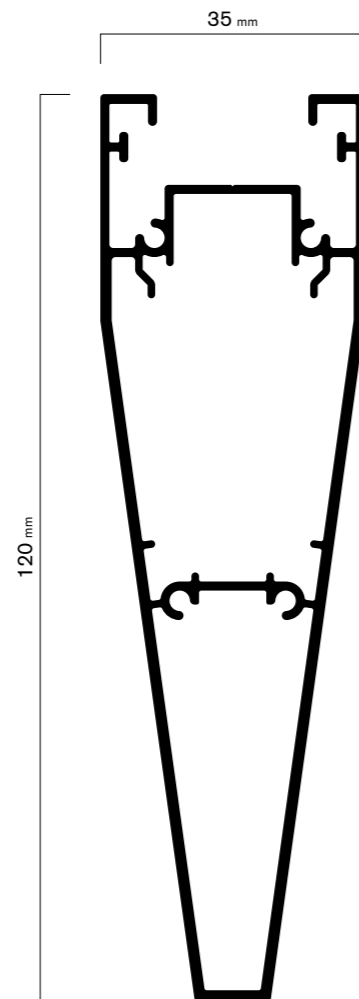
DRESSWALLSTRIPES

PROFILES

PROFILI

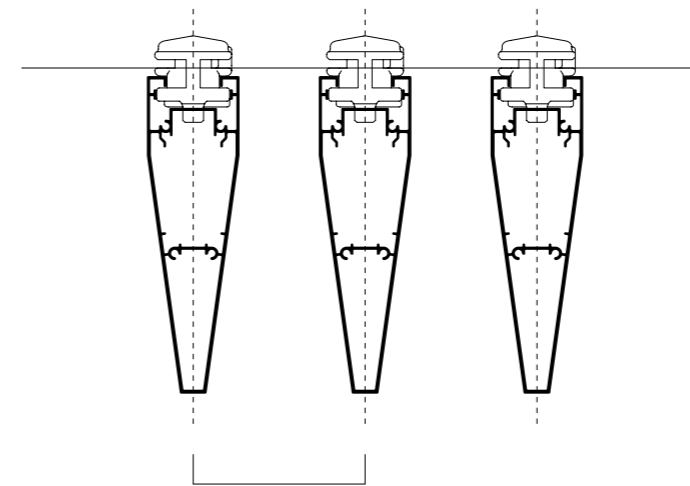
LN10/120





- Extruded aluminum profile, trapezoid section w/ 10-35 mm Bases and 120 mm Height
- Weight 1.415 kg/mt
- Minimum interaxial spacing pitch 65 mm (30 mm spacing)
- Maximum stripe length 6mt, multiple junctions possible through retractable intersection to grant easy removal of every single stripe
- Optional stripe closing cap thickness 1.5 mm

- Profilo estruso in alluminio a sezione trapezoidale base 10-35 mm altezza 120 mm
- Peso 1,415 Kg/m
- Passo minimo interasse 65 mm (Spaziatura 30 mm)
- Lunghezza massima doga 6 m giuntabile a seguire con innesto retraibile per garantire la facile rimozione di ogni singola barra
- Tappo chiusura di testa opzionale spessore 1,5 mm



Free pitch defined during project. Minimum interaxial pitch 65 mm, 30 mm spacing.
Passo libero definito in fase di progetto. Passo minimo interasse 65 mm, spaziatura 30 mm.