

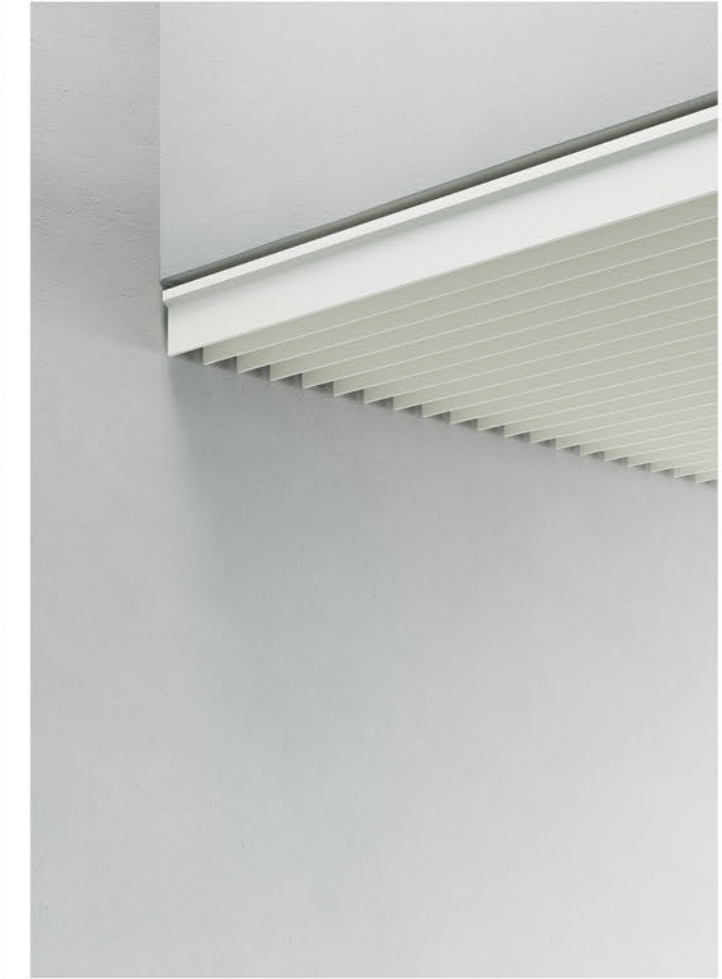
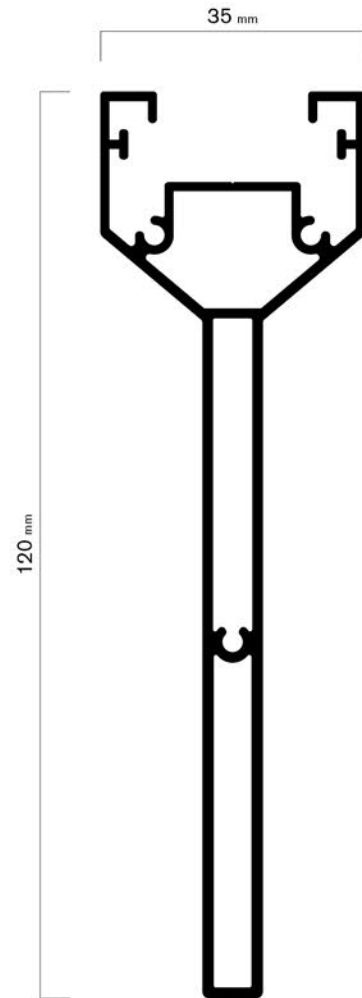
DRESSWALLSTRIPES

PROFILES

PROFILI

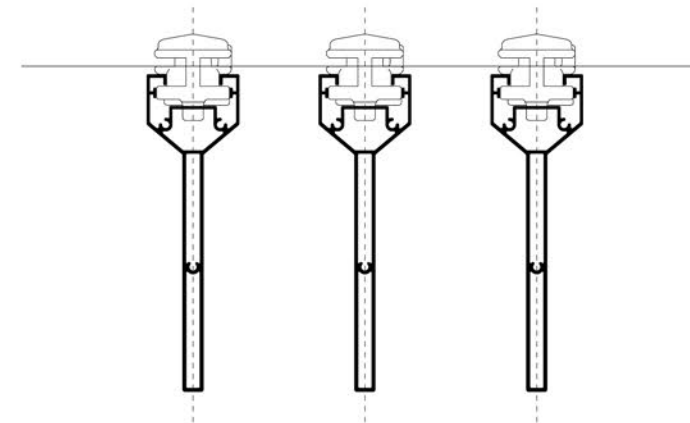
LN8/120





- Extruded aluminum profile, linear section w/ 8-35 mm Bases and 120 mm Height
- Weight 1.293 kg/mt
- Minimum interaxial spacing pitch 65 mm (30 mm spacing)
- Maximum stripe length 6 mt, multiple junctions possible through retractable intersection to grant easy removal of every single stripe
- Optional stripe closing cap thickness 1.5 mm

- Profilo estruso in alluminio a sezione lineare base 8-35 mm altezza 120 mm
- Peso 1,293 Kg/m
- Passo minimo interasse 65 mm (Spaziatura 30 mm)
- Lunghezza massima doga 6 m giuntabile a seguire con innesto retraibile per garantire la facile rimozione di ogni singola barra
- Tappo chiusura di testa opzionale spessore 1,5 mm



Free pitch defined during project. Minimum interaxial pitch 65 mm, 30 mm spacing.
Passo libero definito in fase di progetto. Passo minimo interasse 65 mm, spaziatura 30 mm.